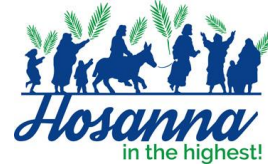


St Augustine's Catholic Primary School is committed to safeguarding and promoting the welfare of children and young people.

St Augustine's Catholic Primary School

Week ending Friday 04 April 2025



Live, Love and Learn with Jesus

THE WEDNESDAY WORD

Special word of the week is:

"NEW START"

Early in the morning, Jesus came into the temple and all the people came to him. He sat down and taught them. The scribes and the Pharisees brought to him a woman who had sinned. They said to him: Master, this woman has sinned greatly. Moses in the law commanded us to stone such a one. But what do you say? They said this to tempt him so that they might accuse him. But Jesus bowed himself down and wrote with his finger on the ground. When they continued asking him, he lifted up himself and said to them: He that is without sin among you, let him first cast a stone at her. Again stopping down, he wrote on the ground. But they hearing this, went out one by one, beginning at the eldest. Jesus alone remained with the woman. Jesus said to her: Where are they that accused you? Has no man condemned you? The woman replied: No man, Lord. Jesus said: Neither will I condemn you. Go, and now sin no more.

John 8: 1-11



THIS WEEK'S NEWS



Thank you for your support for Birmingham Children's Hospital

- We enjoyed our special dance & singing sessions with the Royal Opera House team this week.
- Y6 also had a special Heritage Workshop led by Mr Gilroy Brown.

Next week:

- Easter Display - M/Tu/W
- Flute Ensemble performing @ Royal Birmingham Conservatoire - Monday
- Sacrament of Confirmation - Wednesday
- Holy Week Assemblies - M/W/Th
- Two non-uniform days - Th & F
- Riverside Theatre - Thursday pm
- Early Closure - Friday

Thank you for attending Parents' Evenings. If you missed your appointment, please get in touch to re-arrange.

Your early calls and e-mails are much appreciated. We need to know before 09:00 if your child is unable to attend.

0121 554 5069

This week's attendance: **84%**

Chickenpox and stomach upsets are still having an effect.

Arriving On Time For School



By Heather Androssoff

Thank you for making sure children are in school on time.



Always park safely and considerately near our school.



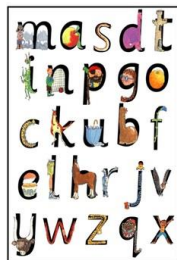
Work together for safety.

PRAY FAST GIVE

Your generosity during Lent is helping to safeguard so many vulnerable people. Thank you.

MESSAGES FROM CLASS TEACHERS

Nursery	Nursery children have explored the story of 'The Gingerbread Man' and all of the characters. What an interesting set of characters they are!
Reception	In Reception Class this week, we have been looking for signs of Spring! We have been on a spring walk and painted spring flowers.
Year One	We are going to miss Miss Wakeman so much in Year 1 as she completes her university course to become a teacher! Thank you for helping us to be the best that we can be!
Year Two	This week we had a new pupil in the classroom. All of Year 2 have been excellent at making her feel comfortable and welcome, showing her kindness, love and respect.
Year Three	In Y3 this week, we have been learning all about bar charts. We explored how to interpret and represent data.
Year Four	It was lovely to share the children's progress with you at Parents Evenings. This week we have been learning how to calculate the area of shapes.
Year Five	We've been thinking about Holy Week in Year Five. Everyone has worked very hard and extended their knowledge and understanding of this important week in the church's year.
Year Six	Well done, Year 6! You are working so hard to learn all the key facts and important information for our special work in a few weeks' time.



ay	ee	igh
ow	oo	oo
ar	or	air
ir	ou	oy

Reception

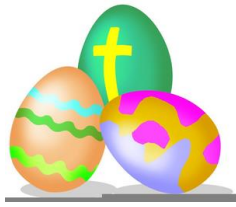
<https://schools.ruthmiskin.com/training/view/1SM16JD6/LEw6bsJK>
<https://schools.ruthmiskin.com/training/view/eqEMIXCD/vLD8mzTS>
<https://schools.ruthmiskin.com/training/view/SIHxzIve/6BAUgWJZ>
<https://schools.ruthmiskin.com/training/view/IZJRyJbm/qdA1dsjq>
<https://schools.ruthmiskin.com/training/view/2TqeAK7v/qh4dQ5CD>

Year One

<https://schools.ruthmiskin.com/training/view/BLm1IQPu/KQ3LHvDI>
<https://schools.ruthmiskin.com/training/view/AhdQ9Vam/nGZLdF5L>
<https://schools.ruthmiskin.com/training/view/MIMXDf8z/LvvmVGzU>
<https://schools.ruthmiskin.com/training/view/j3w1b2pJ/CAI3oFt7>

Year Two

<https://schools.ruthmiskin.com/training/view/kaqBHgJv/NosPlxik>
<https://schools.ruthmiskin.com/training/view/Da9EPw0x/eCsmY8OC>
<https://schools.ruthmiskin.com/training/view/ozacIfc/yckP1wHE>
<https://schools.ruthmiskin.com/training/view/kvzor3I7/1tMjECJO>



Next week, children in R > Y6 are invited to bring in a piece of art work or a model to recognise the Season of Easter. These could be Easter Gardens, models of Calvary, painted eggs or other items which reflect this important season. Items can be brought in up to Wednesday.

Children in Nursery are invited to bring in an Easter Bonnet/Easter Hat on Wednesday 09 April.

There will also be an "Egg Hunt" around school that day!

LENTEN ACTIVITIES 2025

DONATIONS OF GIFTS &/or 50p

Thank you for your ongoing support.
Your gifts are very much appreciated.
Giving and sharing, however little,
will help someone have a better life.

Thursday 10/04/25






CAFOD RAFFLE FOR OUR JUBILEE PLEDGE

NON-UNIFORM - bring some money to buy a ticket

Friday 11/04/25 NON-UNIFORM - FREE!





Element	Explanation
	<p>The four figures represent 'all of humanity, coming from the four corners of the earth. They embrace each other to indicate the solidarity and fraternity which should unite all peoples.' The figures also remind us that we do not journey through life alone and that we are united with our brothers and sisters in Christ.</p>
	<p>The figure at the front is embracing the cross. The symbolism of this is twofold. The cross is a well-known sign of faith and it is also a sign of hope: we need to hold onto our faith 'especially in our moments of greatest need.'</p>
	<p>There are waves beneath the figures. This reminds us that our pilgrim's journey through life is not always calm and smooth: throughout our lives we will have to face all kinds of different challenges.</p>
	<p>The symbol of hope is further enhanced by the lower part of the cross which is in the shape of an anchor. It is submerged deep into the waters and signifies how, like an anchor, our faith gives us stability and security.</p>
	<p>In this logo the cross is also bending 'down towards humanity, not leaving human beings alone, but stretching out to them to offer the certainty of its presence and the security of hope.'</p>
	<p>The motto 'Pilgrims of Hope' is ahead of the boat in the direction of travel. Green is a colour of growth and hope. At Easter time we see the signs of spring emerging from the earth coinciding with our celebration of the Resurrection through which our hope and salvation is realised.</p>

